

District Report Card for Aspirational Districts

KARAULI (Rajasthan)

Percentage of student
performing below basic

7%



INTRODUCTION

The District Report Card (DRC) presents the academic achievement of school students at the District Level along with the participation rate of students and schools in the National Achievement Survey (NAS). The DRC communicates the findings of the NAS for classes III, V, VIII and X.



MINISTRY OF
EDUCATION
GOVERNMENT OF INDIA

NAS 2017

National Achievement Survey
Class III, V, VIII and X

**District Report Card for
Aspirational Districts
KARAULI (Rajasthan)**

विद्यया ऽ मृतमश्नुते



एन सी ई आर टी
NCERT

राष्ट्रीय शैक्षिक अनुसंधान और प्रशिक्षण परिषद्
NATIONAL COUNCIL OF EDUCATIONAL RESEARCH AND TRAINING

ISBN 978-93-5580-043-5

NAS 2017-18

Classes III, V, VIII and X

District Report Card for Aspirational Districts KARAULI (Rajasthan)

First Edition

October 2021 Ashwina 1943

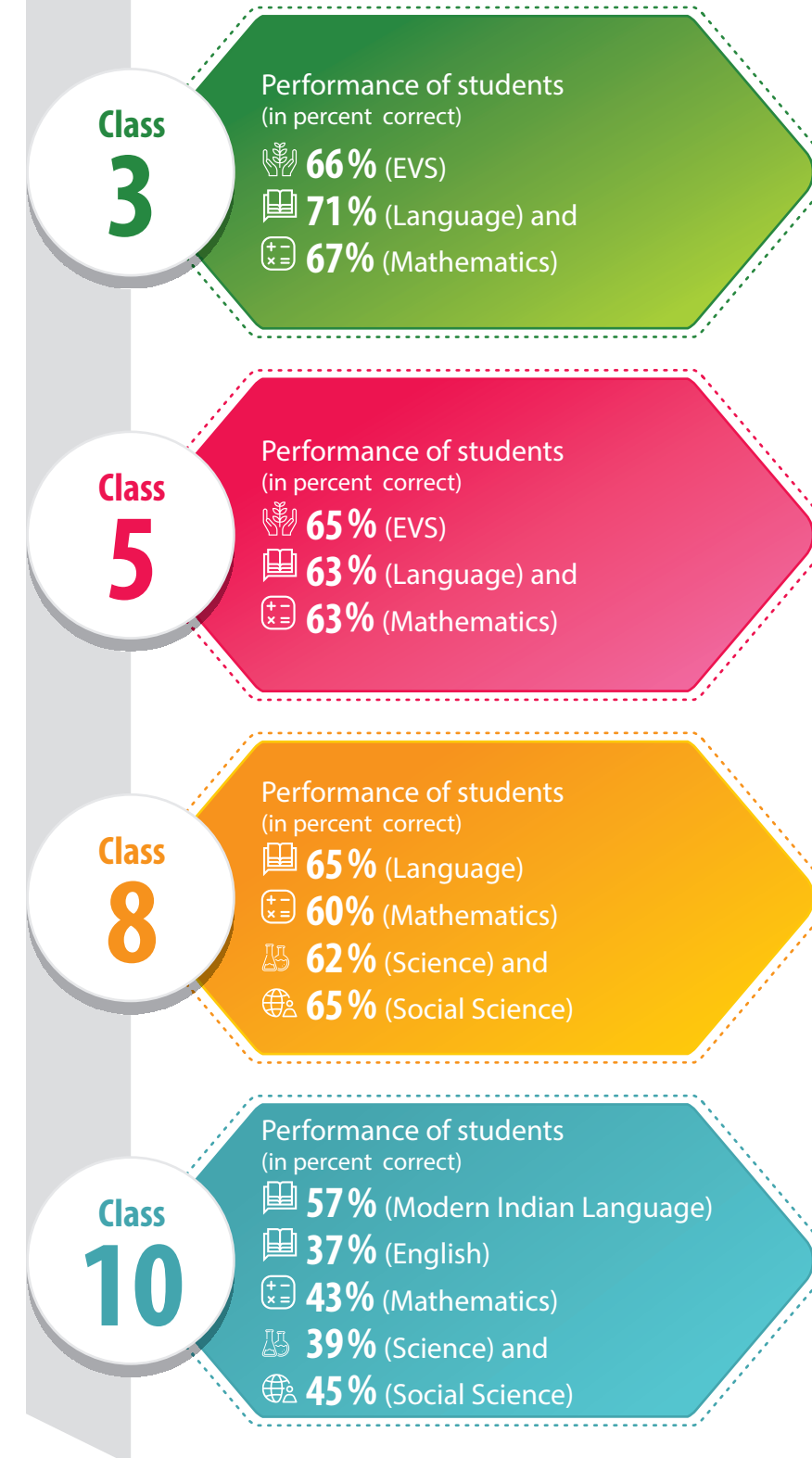
© National Council of Educational Research and Training, 2021

All rights reserved. No part of this report may be reproduced in any form or by any electronic or mechanical means – except in the case of brief quotations embodied in articles or reviews – without written permission from its publisher.

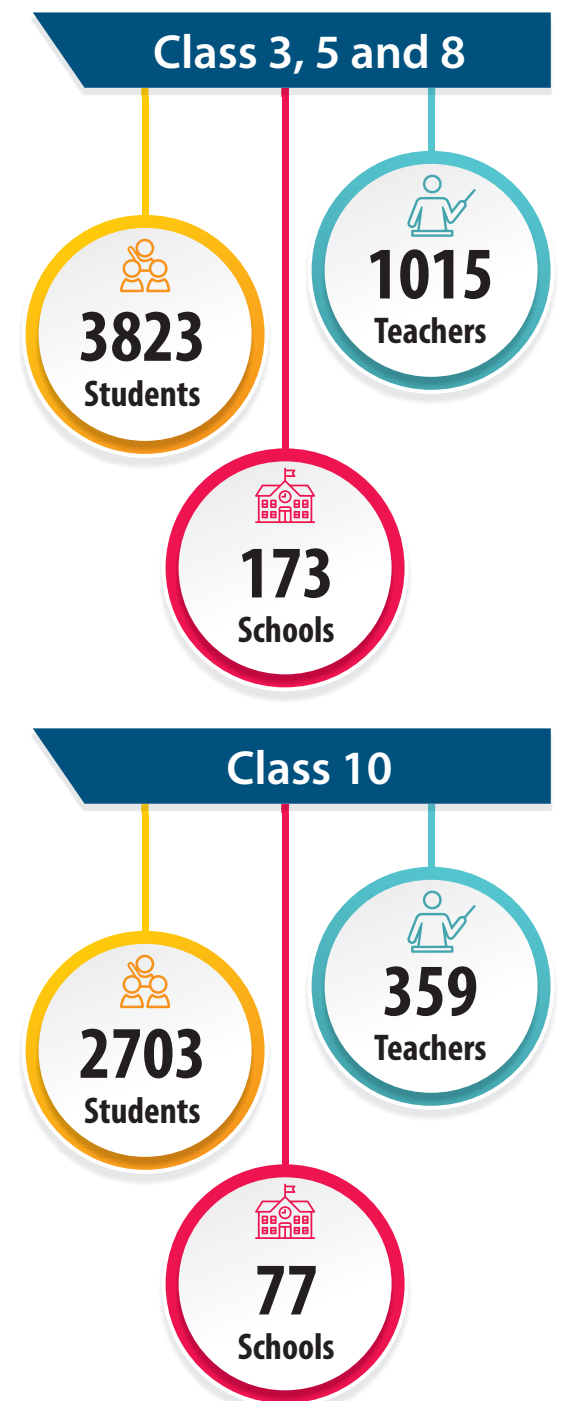
Unpriced — Printed Digitally

Published at the NAS Cell by Secretary, National Council of Educational Research and Training, Sri Aurobindo Marg, New Delhi 110016.

Highlights



Participation



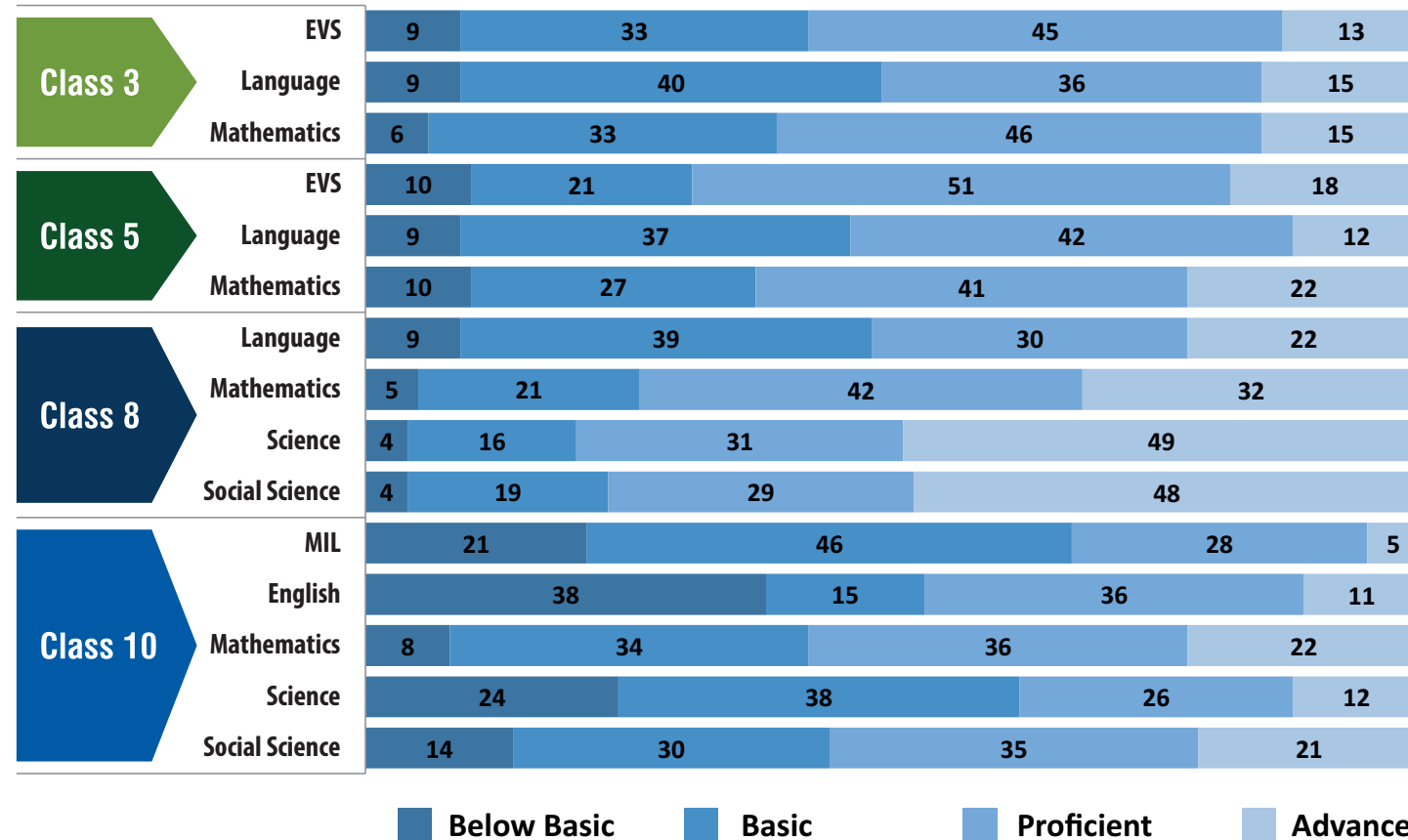
Average Achievement (in percent correct)



Performance by Gender

Subject	Level	Class 3		Class 5		Class 8		Class 10	
		Boys	Girls	Boys	Girls	Boys	Girls	Boys	Girls
EVS	District	67	65	65	65	--	--	--	--
	State	72	72	69	69	--	--	--	--
	National	63	63	55	56	--	--	--	--
Language/English	District	72	70	64	63	66	64	36	39
	State	76	76	69	69	67	67	37	38
	National	66	67	56	57	55	56	36	37
Mathematics	District	68	67	63	62	61	59	43	42
	State	71	71	65	65	57	57	39	38
	National	62	62	52	52	41	41	34	33
Science	District	--	--	--	--	64	60	39	38
	State	--	--	--	--	62	62	38	38
	National	--	--	--	--	43	43	34	34
Social Science	District	--	--	--	--	66	63	45	46
	State	--	--	--	--	63	62	44	45
	National	--	--	--	--	42	43	39	39
MIL	District	--	--	--	--	--	--	56	58
	State	--	--	--	--	--	--	57	57
	National	--	--	--	--	--	--	47	49

Percentage of Students by Performance Level



Performance by Location

Subject	Level	Class 3		Class 5		Class 8		Class 10	
		Rural	Urban	Rural	Urban	Rural	Urban	Rural	Urban
EVS	District	65	69	65	61	--	--	--	--
	State	72	75	69	69	--	--	--	--
	National	69	73	61	56	--	--	--	--
Language/English	District	71	77	63	60	65	52	37	37
	State	76	77	69	68	67	66	37	37
	National	74	70	61	58	54	53	33	43
Mathematics	District	67	79	63	57	61	42	43	45
	State	71	72	65	64	57	54	39	38
	National	72	72	67	62	43	35	29	39
Science	District	--	--	--	--	62	56	39	37
	State	--	--	--	--	62	61	38	37
	National	--	--	--	--	44	40	34	37
Social Science	District	--	--	--	--	65	49	46	42
	State	--	--	--	--	63	61	45	43
	National	--	--	--	--	44	45	36	41
MIL	District	--	--	--	--	--	--	56	60
	State	--	--	--	--	--	--	57	58
	National	--	--	--	--	--	--	37	40



Performance by Management

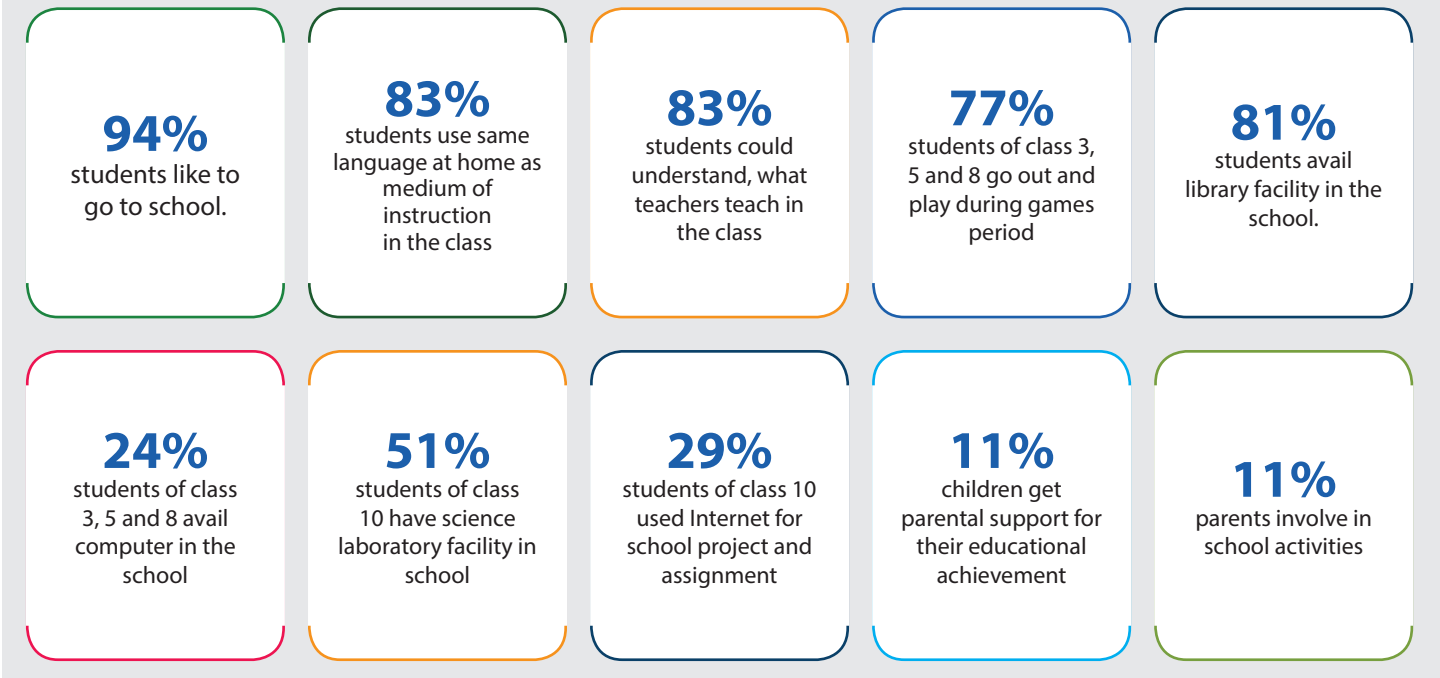
		Class 3		Class 5		Class 8		Class 10		
		Govt.	Govt. Aided	Govt.	Govt. Aided	Govt.	Govt. Aided	Govt.	Govt. Aided	Private
EVS	District	64	--	61	--	--	--	--	--	--
	State	63	63	62	55	--	--	--	--	--
	National	63	41	56	35	--	--	--	--	--
Language/English	District	68	--	63	--	58	--	43	--	32
	State	65	64	60	55	60	52	37	27	36
	National	66	43	57	37	55	41	28	21	42
Mathematics	District	61	--	59	--	45	--	41	--	40
	State	65	65	58	55	48	36	37	30	38
	National	63	41	52	33	41	29	27	20	36
Science	District	--	--	--	--	52	--	42	--	36
	State	--	--	--	--	52	37	38	37	36
	National	--	--	--	--	43	30	28	21	36
Social Science	District	--	--	--	--	54	--	47	--	42
	State	--	--	--	--	52	38	43	37	43
	National	--	--	--	--	43	30	32	23	41
MIL	District	--	--	--	--	--	--	62	--	55
	State	--	--	--	--	--	--	54	49	59
	National	--	--	--	--	--	--	37	28	52



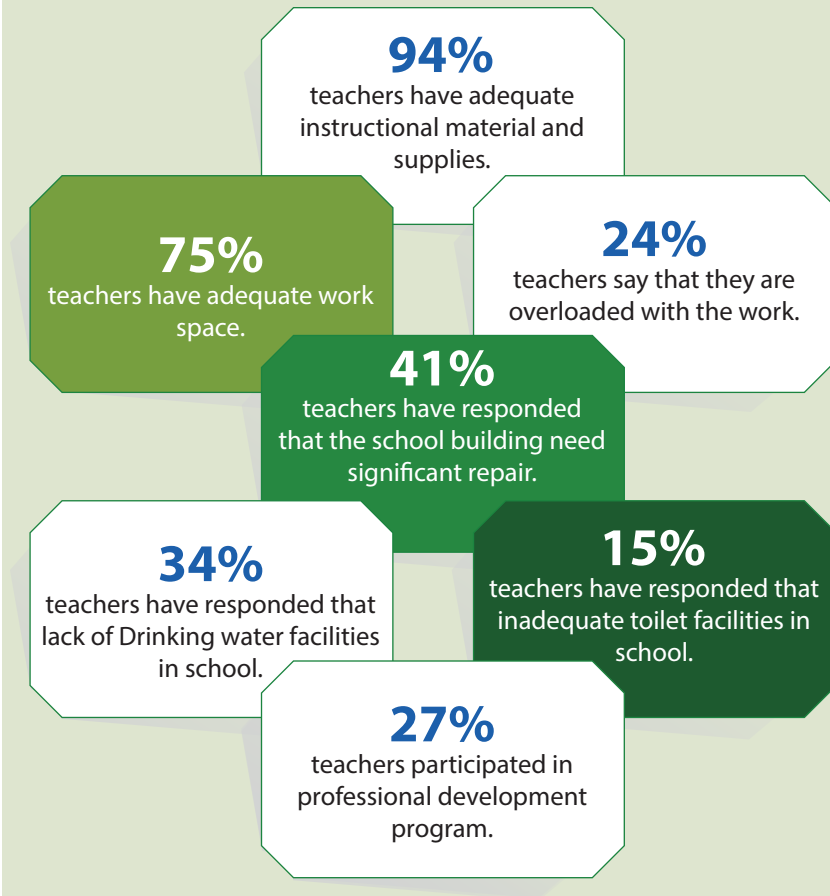
Performance by Social Group

		Class 3				Class 5				Class 8				Class 10				
		SC	ST	OBC	Oth.	SC	ST	OBC	Oth.	SC	ST	OBC	Oth.	SC	ST	OBC	Oth.	
EVS	District	66	68	64	67	60	69	68	65	--	--	--	--	--	--	--	--	--
	State	73	70	72	72	69	71	70	69	--	--	--	--	--	--	--	--	--
	National	63	61	64	64	55	54	56	57	--	--	--	--	--	--	--	--	--
Language/English	District	71	72	71	72	59	70	65	68	64	62	66	67	38	36	39	33	
	State	77	74	77	77	69	69	69	71	66	65	68	69	37	37	38	41	
	National	66	64	67	67	56	56	57	58	55	52	57	58	34	34	36	39	
Mathematics	District	67	70	68	56	60	67	65	55	59	59	61	61	43	42	44	41	
	State	72	68	71	71	65	64	66	66	56	57	58	57	38	36	39	41	
	National	62	60	63	64	52	50	53	54	40	39	41	42	32	31	34	36	
Science	District	--	--	--	--	--	--	--	--	60	64	63	60	41	37	41	33	
	State	--	--	--	--	--	--	--	--	61	60	63	62	37	36	38	40	
	National	--	--	--	--	--	--	--	--	42	41	44	44	33	33	34	35	
Social Science	District	--	--	--	--	--	--	--	--	64	67	65	63	46	44	46	43	
	State	--	--	--	--	--	--	--	--	61	62	64	63	44	44	45	46	
	National	--	--	--	--	--	--	--	--	42	40	43	44	38	38	39	41	
MIL	District	--	--	--	--	--	--	--	--	--	--	--	--	54	58	58	56	
	State	--	--	--	--	--	--	--	--	--	--	--	--	56	54	58	61	
	National	--	--	--	--	--	--	--	--	--	--	--	--	47	45	49	51	

What Children say about Schools?

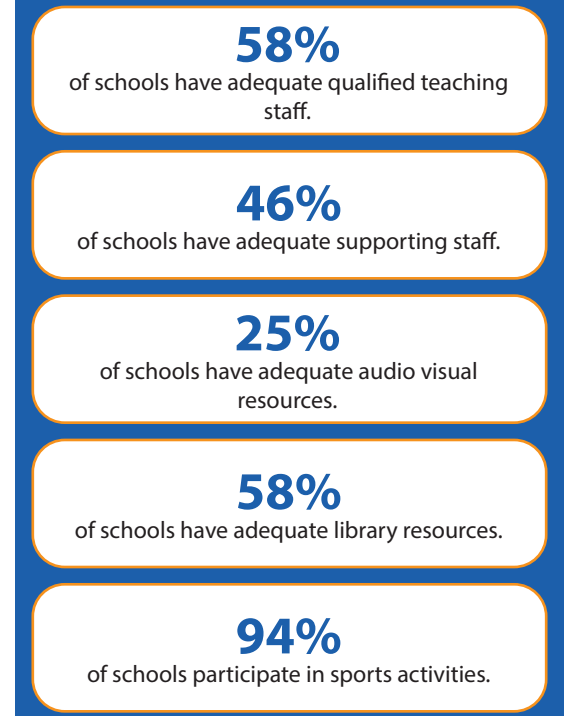


What teachers responded about school?



24% Students attended pre-primary classes/anganwadi

What head teacher responded about school ?



Performance of the District in Learning Outcomes (LOs)

Class 3

LO Code	Learning Outcomes for Class 3	Average Performance (in percent)
Language		
L304	Reads small texts with comprehension i.e., identifies main ideas, details, sequence and draws conclusions	71
L312	Reads printed scripts on the classroom walls: poems, posters, charts etc	71
Mathematics		
M301	Reads and writes numbers up to 999 using place value	64
M302	Compares numbers up to 999 based on their place values	82
M303	Solves simple daily life problems using addition and subtraction of three digit numbers with and without regrouping	63
M304	Constructs and uses the multiplication facts (up till 10) in daily life situations	74
M305	Analyses and applies an appropriate number operation in the situation/ context	64
M306	Explains the meaning of division facts by equal grouping/sharing and finds it by repeated subtraction	70
M309	Identifies and makes 2D-shapes by paper folding, paper cutting on the dot grid, using straight lines etc.	79
M311	Fills a given region leaving no gaps using a tile of a given shape	42
M312	Estimates and measures length and distance using standard units like centimeters or meters & identifies relationships	30
M317	Reads the time correctly to the hour using a clock/watch	74
M318	Extends patterns in simple shapes and numbers	65
M319	Records data using tally marks, represents pictorially and draws conclusions	77
EVS		
E302	Identifies simple features (e.g. movement, at places found/ kept, eating habits, sounds) of animals and birds in the immediate surroundings.	57
E303	Identifies relationships with and among family members	67
E304	Identifies objects, signs (vessels, stoves, transport, means of communication, transport, signboards), places (types of houses/shelters, bus stand, petrol pump) activities (works people do, cooking processes) at home/school/neighbourhood	66
E305	Describes need of food for people of different age groups, animals/birds, availability of food and water and use of water at home and surroundings	70
E307	Groups objects, birds, animals, features, activities according to differences/similarities using different senses. (e.g. appearance/place of living/ food/ movement/ likes-dislikes/ any other features)	68
E309	Identifies directions, location of objects/places in simple maps using signs/symbols/verbally	56
E310	Guesses properties, estimates quantities of materials/activities in daily life and verifies using symbols/non-standard units.	71
E311	Records observations, experiences, information on objects/activities/places visited in different ways and predicts patterns etc.	57
E313	Observes rules in games (local, indoor, outdoor)	31
E314	Voices opinion on good/bad touch, stereotypes for tasks/play/food in family w.r.t gender, misuse/wastage of food and water in family and school.	77

Class 5

LO Code	Learning Outcomes for Class 5	Average Performance (in percent)
Language		
L504	Reads and comprehends independently storybooks, news items/ headlines, advertisements etc.	63
L508	Reads text with comprehension, locates details and sequence of events	64
Mathematics		
M401	Applies operations of numbers in daily life situations	54
M412	Explores the area and perimeter of simple geometrical shapes (triangle, rectangle, square) in terms of given shape as a unit	57
M418	Calculates time intervals/duration of familiar daily life events by using forward or backward counting/addition and subtraction	77
M421	Represent the collected information in tables and bar graphs and draws inferences from these	49
M501	Reads and writes numbers bigger than 1000 being used in her/his surroundings	78
M504	Estimates sum, difference, product and quotient of numbers and verifies the same using different strategies like using standard algorithms or breaking a number and then using operation	64
M505	Finds the number corresponding to part of a collection	59
M506	Identifies and forms equivalent fractions of a given fraction	50
M508	Converts fractions into decimals and vice versa	65
M509	Classifies angles into right angle, acute angle, obtuse angle and represents the same by drawing and tracing	66
M512	Relates different commonly used larger and smaller units of length, weight and volume and converts larger units to smaller units and vice versa	70
M513	Estimates the volume of a solid body in known units	42
M514	Applies the four fundamental arithmetic operations in solving problems involving money, length, mass, capacity and time intervals	58
M515	Identifies the pattern in triangular number and square number	62
M516	Collects data related to various daily life situations, represents it in tabular form and as bar graphs and interprets it.	70
EVS		
E403	Identifies relationship with and among family members in extended family	60
E410	Records observations/experiences/information for objects, activities, phenomena, places visited in different ways and predicts patterns and activities/ phenomena	69
E501	Explains the super senses and unusual features (sight, smell, hear, sleep, sound, etc.) of animals and their responses to light, sound, food etc	69
E503	Describes the interdependence among animals, plants and humans	65
E504	Explains the role and functions of different institutions in daily life (Bank, Panchayat, cooperatives, police station, etc.)	73
E505	Establishes linkages among terrain, climate, resources (food, water, shelter, livelihood) and cultural life. (e.g. life in distant/difficult areas like hot/cold deserts).	47
E506	Groups objects, materials, activities for features/properties such as shape, taste, colour, texture, sound, traits etc.	54
E507	Traces the changes in practices, customs, techniques of past and present through coins, paintings, monuments, museum etc. and interacting with elders	56

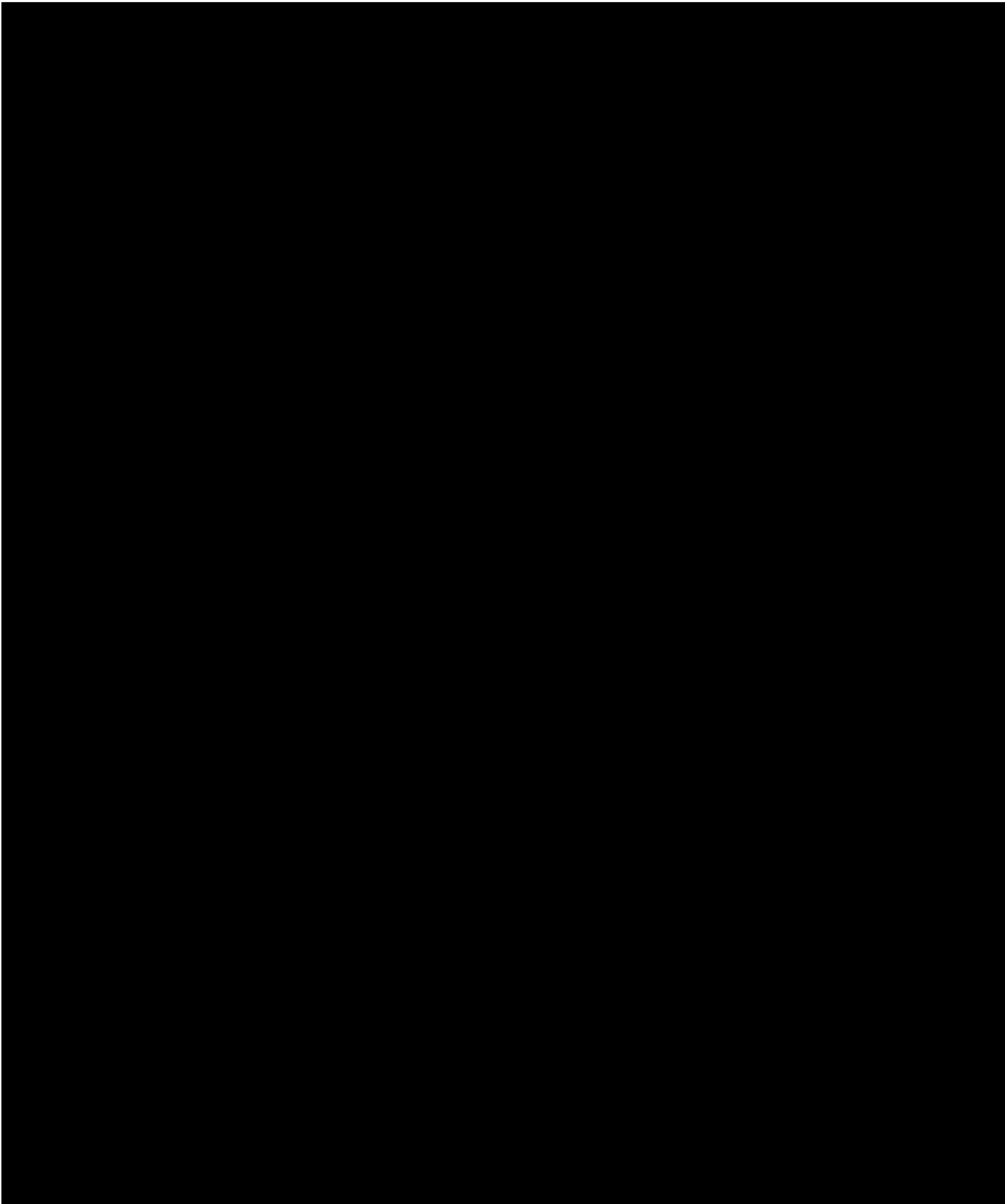
LO Code	Learning Outcomes for Class 5	Average Performance (in percent)
E508	Guesses (properties, conditions of phenomena), estimates spatial quantities (distance, area, volume, weight etc.) and time in simple standard units and verifies using simple tools/set ups	63
E509	Records observations/experiences/information in an organized manner (e.g. in tables/ sketches/ bar graphs/ pie charts) and predicts patterns in activities/phenomena to establish relation between cause and effect	61
E510	Identifies signs, directions, location of different objects/landmarks of a locality /place visited in maps and predicts directions w.r.t. positions at different places for a location	66
E512	Voices opinions on issues observed/experienced and relates practices /happenings to larger issues of society.	64
E513	Suggests ways for hygiene, health, managing waste, disaster/emergency situations and protecting/saving resources	75

Class 8

LO Code	Learning Outcomes for Class 8	Average Performance (in percent)
Language		
L813	Read textual/non-textual materials with comprehension and identifies the details, characters, main idea and sequence of ideas and events while reading	65
Mathematics		
M601	Solves problems involving large numbers by applying appropriate operations	63
M606	Solves problems on daily life situations involving addition and subtraction of fractions / decimals	69
M620	Finds out the perimeter and area of rectangular objects in the surroundings like floor of the class room, surfaces of a chalk box etc.	70
M621	Arranges given/collected information in the form of table, pictograph and bar graph and interprets them	62
M702	Interprets the division and multiplication of fractions	53
M705	Solves problems related to daily life situations involving rational numbers	55
M706	Uses exponential form of numbers to simplify problems involving multiplication and division of large numbers.	66
M707	Adds/subtracts algebraic expressions	80
M710	Solves problems related to conversion of percentage to fraction and decimal and vice versa	62
M717	Finds out approximate area of closed shapes by using unit square grid/ graph sheet	37
M719	Finds various representative values for simple data from her/his daily life contexts like mean, median and mode	64
M721	Interprets data using bar graph such as consumption of electricity is more in winters than summer	75
M801	Generalises properties of addition, subtraction, multiplication and division of rational numbers through patterns	47
M802	Finds rational numbers between two given rational numbers	63
M803	Proves divisibility rules of 2, 3, 4, 5, 6, 9 and 11	78
M804	Finds squares, cubes, square roots and cube roots of numbers using different methods.	69
M808	Use various algebraic identities in solving problems of daily life.	32
M812	Verifies properties of parallelogram and establishes the relationship between them through reasoning	49
M818	Finds surface area and volume of cuboidal and cylindrical object	29
M819	Draws and interprets bar charts and pie charts	60

LO Code	Learning Outcomes for Class 8	Average Performance (in percent)
Science		
SCI703	Classifies materials and organisms based on properties/characteristics	59
SCI704	Conducts simple investigation to seek answers to queries	32
SCI705	Relates processes and phenomenon with causes	58
SCI708	Measures and calculates e.g., temperature; pulse rate; speed of moving objects; time period of a simple pendulum, etc	81
SCI710	Plots and interprets graphs	64
SCI711	Constructs models using materials from surroundings and explains their working	61
SCI801	Differentiates materials, organism and processes	68
SCI804	Relates processes and phenomenon with causes	67
SCI805	Explains processes and phenomenon	53
SCI807	Measures angles of incidence and reflection, etc.	69
SCI811	Applies learning of scientific concepts in day-to-day life	66
SCI813	Makes efforts to protect environment	80
Social Science		
SST605	Identifies latitudes and longitudes, e.g., poles, equator, tropics, States/UTs of India and other neighbouring countries on globe and the world map	82
SST610	Locates important historical sites, places on an outline map of India	67
SST625	Describes the functioning of rural and urban local government bodies in sectors like health and education	31
SST703	Explains preventive actions to be undertaken in the event of disasters	53
SST704	Describes formation of landforms due to various factors	50
SST722	Explains the significance of equality in democracy	54
SST726	Describes the process of election to the legislative assembly	67
SST731	Explains the functioning of media with appropriate examples from newspapers.	79
SST733	Differentiates between different kinds of markets	79
SST734	Traces how goods travel through various market places.	79
SST802	Describes major crops, types of farming and agricultural practices in her/his own area/state	78
SST805	Locates distribution of important minerals e.g. coal and mineral oil on the world map	52
SST807	Justifies judicious use of natural resources	51
SST809	Draws interrelationship between types of farming and development in different regions of the world	41
SST810	Distinguishes the modern period from the medieval and the ancient periods through the use of sources	70
SST815	Explains the origin, nature and spread of the revolt of 1857 and the lessons learned from it	73
SST816	Analyses the decline of pre-existing urban centers and handicraft industries and the development of new urban centers and industries in India during the colonial period	54
SST818	Analyses the issues related to caste, women, widow remarriage, child marriage, social reforms and the laws and policies of colonial administration towards these issues	74
SST823	Applies the knowledge of the Fundamental Rights to find out about their violation, protection and promotion in a given situation	69
SST827	Describes the process of making a law. (e.g. Domestic Violence Act, RTI Act, RTE Act)	74
SST831	Identifies the role of Government in providing public facilities such as water, sanitation, road, electricity etc., and recognizes their availability	60
SST833	Draws bar diagram to show population of different countries/India/states	68

Performance of Students: Content wise



Project Team

MoE

- Smt. Anita Karwal, *Secretary, Department of School Education and Literacy (SE&L)*
- Shri. Maneesh Garg, *Joint Secretary, Department of School Education and Literacy (SE&L)*
- Shri. JP Pandey, *Director, Department of School Education and Literacy (SE&L)*

NCERT

- Prof. Sridhar Srivastava, *I/c Director, NCERT*
- Prof. Indrani Bhaduri, *Head, ESD and National Coordinator, NAS*
- Dr. Sukhvinder, *Associate Professor, ESD*
- Dr. Vishal D. Pajankar, *Assistant Professor, ESD*
- Dr. Satya Bhushan, *Assistant Professor, ESD*
- Dr. Gulfam, *Assistant Professor, ESD*

Project Supporting Staff (NCERT)

- Ms. Bhaswati De, *Data Manager*
- Mr. Sajid Khalil, *Senior Graphic Designer-cum-Visualizer*
- Mr. Puneet Bholra, *System Analyst*

State Functionaries

State Directorate of Education, SCERTs, SIEs, DIETs, Schools

For any clarification, please contact:
indranibhaduri@nationalachievementsurvey.co.in



National Achievement Survey (NAS) Cell

राष्ट्रीय शैक्षिक अनुसंधान और प्रशिक्षण परिषद्
National Council of Educational Research and Training
Sri Aurobindo Marg, New Delhi - 110016

www.ncert.nic.in